





STANDARD

At H & H Bath and Safety, we are devoted to producing comfortable, durable, safe and stylish bath products of the highest quality and value. Our all-American approach to innovation in design and excellence in service and production means our work exceeds the standards set for bath products that serve special health needs. We understand the long-term impact of an environmentally-conscious approach to manufacturing, so we use recycled materials whenever possible and ensure our finished products are fully recyclable and LEED compliant.





Satin stainless finish

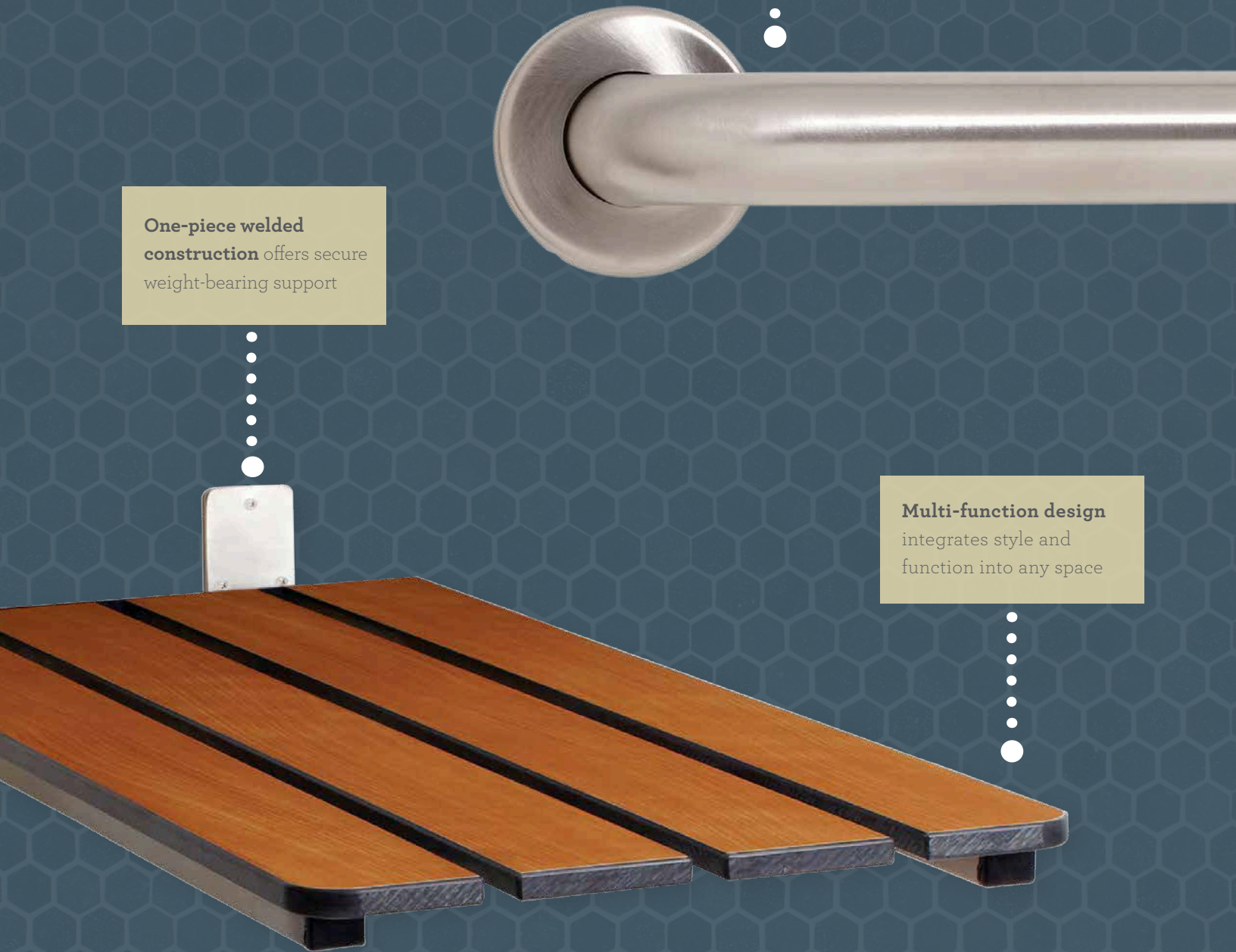
ensures lasting wear with elegant appeal

One-piece welded construction

offers secure weight-bearing support

Multi-function design

integrates style and function into any space





SUPPORTING YOU WITH STYLE, COMFORT AND STRENGTH

We design our tub/shower seats and grab bars with an eclectic range of sturdy, long-lasting and beautiful materials. From our classic #304 stainless steel to the finest quality phenolic white, teak, HDPE, padded naugahyde, and new solid-surface materials in our seat tops, The Signature line offers comfort, style and strength. Our expertise in the guidelines set by the Americans with Disabilities Act is incorporated into the entire Standard product line assuring safety and security, with our made-in-the-USA pride in every product.



STANDARD GRAB BAR

INSTITUTIONAL GRAB BAR

TOP VIEW

WALL FLANGES

Mounting flanges are constructed of #304 (18-8) stainless steel, heliarc-welded to the bar to form a single structural unit. Flanges are available in the following styles:

EXPOSED SCREW FLANGES

- ER** 14 ga. (2.0mm) x 3" (76mm) dia. on 1-1/4" bars;
12 ga. (2.8mm) x 3" (76mm) dia. on 1-1/2" bars
- EW** 10 ga. (3.6mm) x 3" (76mm) dia.

CONCEALED SCREW FLANGES

- CR** 14 ga. (2.0mm) x 3" (76mm) dia. welded on 1-1/4" bars or 1-1/2" bars concealed by a 22 ga. (0.8mm) x 3-1/8" (79mm) dia. "snap on" cover.
- CB** 14 ga. (2.0mm) x 3" (76mm) dia. bolted on 1-1/4" bars or 1-1/2" bars concealed by a 22 ga. (0.8mm) x 3-1/8" (79mm) dia. "snap-on" cover.

LOAD BEARING AND INSTALLATION

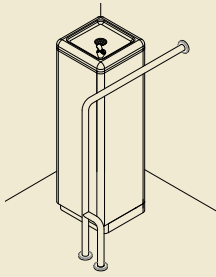
All close-clearance, wall-mounted straight bars have been designed and manufactured to support loads in excess of all applicable federal load specifications when properly installed. The actual "in use" load bearing capacity of any grab bar, however, will be limited by the strength of its mounting surface and installation hardware.

We recommend that grab bars be installed using 2" minimum thickness "in wall" solid wood backing material with #10 x 2" stainless steel, Phillips head, sheet metal screws, or using a wall embedded minimum 12 ga.(2.8mm) steel anchor plate with #10-24 stainless steel machine screws. When mounting on toilet partitions, we recommend the use of 3" (76mm) dia., 16 ga. (1.6mm), stainless steel, "through-wall" anchor disks. Please contact the factory for further mounting recommendations.

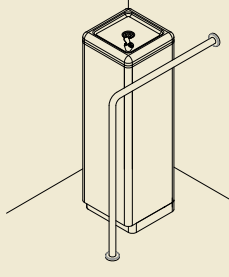
Under no circumstances should any grab bar be mounted to drywall, sheetrock, plaster, fiberglass, acrylic or other similar "hollow" wall surfaces without appropriate wood or steel backing material.

STANDARD GRAB BARS

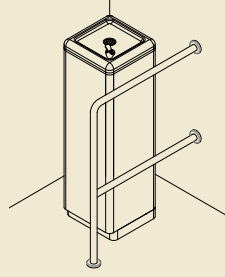
Grab Bar Configuration Options



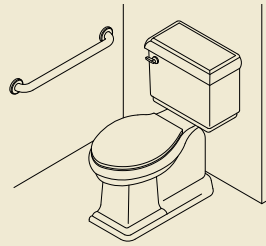
WALL TO FLOOR BAR
WITH SIDE LEG



WALL TO FLOOR BAR



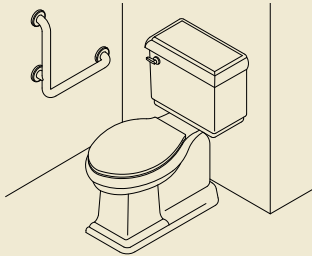
WALL TO FLOOR
DRINKING
FOUNTAIN BAR



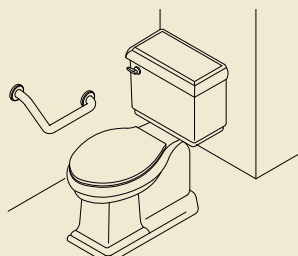
STRAIGHT BAR



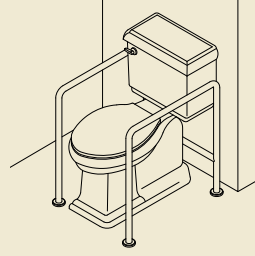
STRAIGHT BAR WITH
MIDDLE SUPPORT



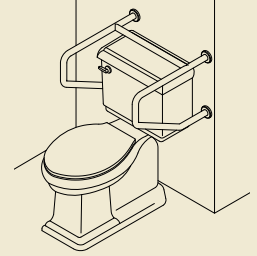
VERTICAL ANGLE BAR



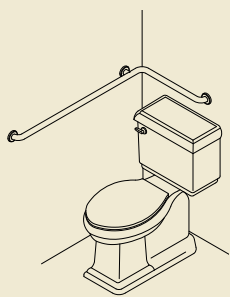
BOOMERANG BAR



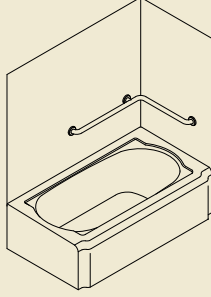
FLOOR TO FLOOR
STRADDLE BAR



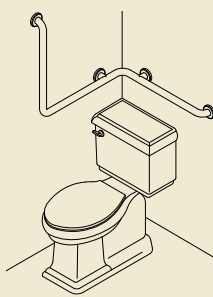
WALL TO WALL
STRADDLE BAR



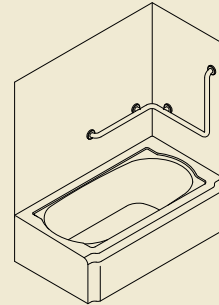
TUB SHOWER BAR
(REVERSIBLE)



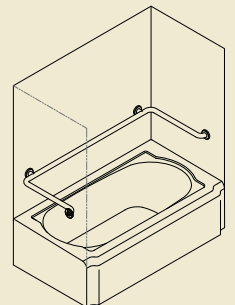
TUB SHOWER BAR
(REVERSIBLE)



2-WAY TUB SHOWER BAR
(LEFT-HAND SHOWN)

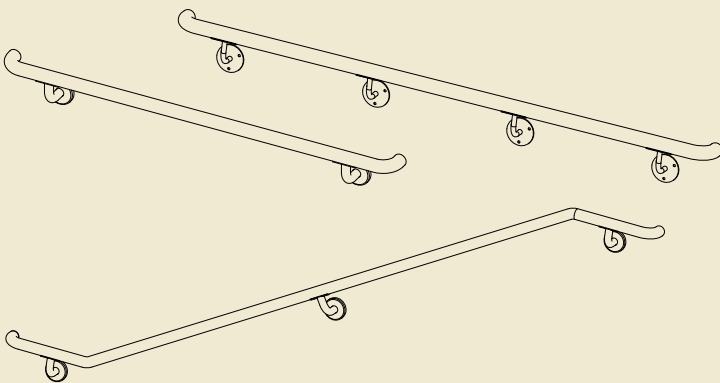


2-WAY TUB SHOWER BAR
(RIGHT-HAND SHOWN)

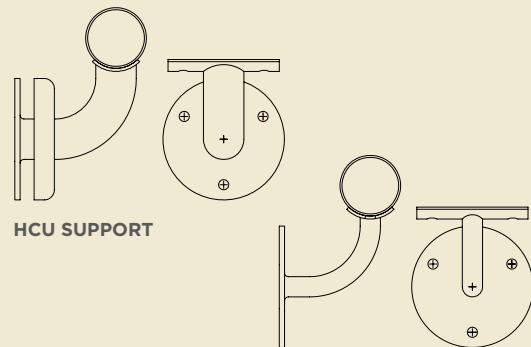


U-SHAPED BAR

Hand Rail Configuration Options



Under Slung Supports



HCU SUPPORT

HEU SUPPORT

GRAB BAR COLORS AND FINISHES



Polished Stainless

Satin Stainless

Satin Nickel

White

Biscuit

Almond

Black

Bronze



TUB AND SHOWER SEATS



BENCH SEAT

Convenient bench seat provides solid support and easily folds up against wall when not in use. LENGTH: 18" | DEPTH: 15"



BENCH SEAT

This custom bench seat offers our new Aspen Putty solid surface top with custom wave slots for drainage. Folds up easily against the wall when not in use. LENGTH: 32" | DEPTH: 15"



TRANSFER SEAT

This one-piece L-shaped transfer seat comes in durable high-density polyethylene (HDPE). Available in white only. LENGTH: 32" | DEPTH: 22.5"



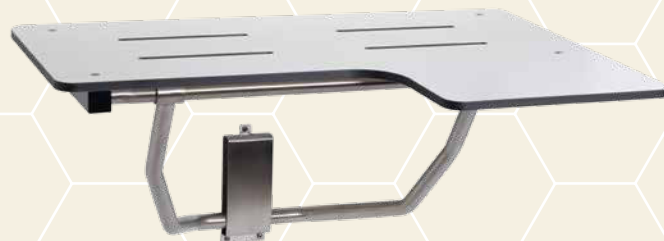
TRANSFER SEAT

An L-shaped transfer seat with a left-hand return that folds up when not in use. Shown in our new solid-surface Basalt seat top with slats. LENGTH: 32" | DEPTH: 22.5"



TRANSFER SEAT (RIGHT HAND SHOWN)

An L-shaped transfer seat with a right-hand orientation. Shown in elegant phenolic teak with slats. LENGTH: 32" | DEPTH: 22.5"



REVERSIBLE TRANSFER SEAT

(LEFT HAND SHOWN)

This solid, one-piece transfer seat offers bathing security with a left or right-hand orientation. Solid phenolic top in white or teak slotted for drainage. Nylock mounting system for easy, secure attachment. LENGTH: 32" | DEPTH: 22.5"

SOLID SURFACE COLORS



Frost



Sanded Cream



Gold



Aspen Putty



Copper



Basalt



Tempest Zenith



Quarry Palisade



Coffee Bean



Ebony

Our seats meet Federal Spec. WW-P-541/8b and ANSI 117.1. When properly installed, all seats exceed applicable federal load specifications. These models have been independently tested to withstand 1,000 lbs in a 30-minute static load test.



COMPACT FOLDING SHOWER SEAT

Left-hand transfer seat with padded naugahyde (white or almond) seat top.
LENGTH: 26" | DEPTH: 22.5"



BENCH SEAT WITH SWING DOWN LEGS

This securely designed seat features a #304 stainless steel frame with swing-down legs and a variety of elegant seat options including the slatted solid surface top in Ebony shown here.
LENGTH: 24" | DEPTH: 15"



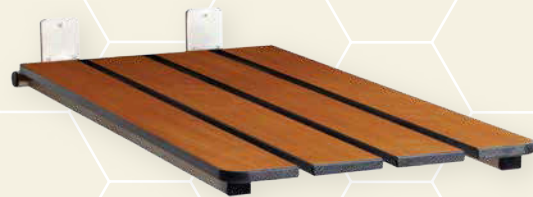
PORTABLE TUB SEAT

This convenient portable seat with adjustable leveling feet locks on to the tub apron to create solid support. Legs fold up for easy storage and portability. One-piece white phenolic surface.
LENGTH: 26.5" | DEPTH: 16"



REAR MOUNT FOLD-UP TUB BENCH SEAT

Sleekly-designed rear-hung, folding tub seat rests on tub ledges in the down position, enhancing support. One-piece, frameless phenolic material with smooth, rounded edges. Shown in phenolic teak.
WIDTH: 29" | DEPTH: 16.5"



END MOUNT TUB SEAT

The stainless steel frame of this end-mounted tub seat supports a durable 1/2" phenolic top that is waterproof, stain resistant and easy to clean. Shown here with slats but also available in a solid one-piece seat top.
LENGTH: 29" | WIDTH: 16"

We specialize in custom sizes, configurations, and finishes. Call us at **626-344-9779** for technical assistance and competitive price quotes.

STANDARD SEAT MATERIALS KEY

NW: White naugahyde covering 2" (51mm) thick foam, mounted on 1/2" (13mm) thick marine plywood.

PW or PT: Phenolic (white or teak) 1/2" (13mm) thick x 3" (76mm) wide slats bolted to frame with countersunk stainless steel screws.

PWS or PTS: Phenolic white solid/phenolic teak solid 1/2" thick single piece seat top with slots for drainage.

HDPE: High density polyethylene 1/2" thick one piece white.

SS: 1/2" thick solid surface material available in a variety of color patterns.



SHOWER SEATS

Our seats meet Federal Spec. WW-P-541/8b and ANSI 117.1. When properly installed, all seats exceed applicable federal load specifications. These models have been independently tested to withstand 1,000 lbs in a 30-minute static load test.



TRANSFER SEAT WITH SWING DOWN LEGS (RIGHT HAND SHOWN)

Sturdy, water-resistant seat provides secure stainless steel support with swing-down legs and adjustable leveling feet and left or right-hand options in 10 different color patterns.

LENGTH: 32" | DEPTH: 22.5"



REVERSIBLE SEAT WITH SWING DOWN LEGS

This L-shaped reversible seat design allows for on-the-job assembly in either left or right-hand configuration.

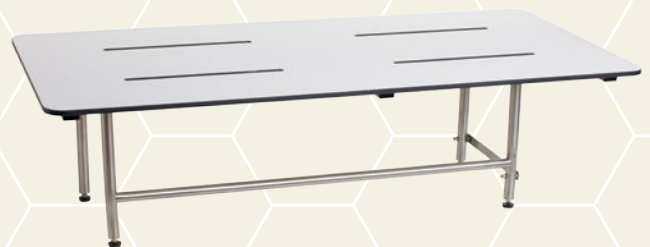
LENGTH: 32" | DEPTH: 22.5"



TRANSFER SEAT WITH SWING DOWN LEGS (LEFT HAND SHOWN)

A sturdy L-shaped, slotted seat featuring secure stainless steel swing-down legs.

LENGTH: 32" | DEPTH: 22.5"



BENCH SEAT WITH SWING DOWN LEGS

Our custom wall-mounted bench seat with swing-down legs meets all federal specifications.

LENGTH: 48" | DEPTH: 24"



STAINLESS STEEL TRANSFER SEAT

This L-shaped transfer seat is fabricated using 100% #304 stainless steel with dual yokes for superior strength. Left and right-hand models meet all federal specifications for institutional applications.

LENGTH: 32" | DEPTH: 22.5"



BARIATRIC SEAT

Designed specifically for bariatric needs, this seat's wall-mounted frame and 3" padded stainless steel leveling feet are engineered to withstand up to 1500 lbs/f. Solid phenolic seat top is slotted for drainage. Also available in phenolic teak.

LENGTH: 36" | DEPTH: 18"

ACCESSORIES

STANDARD



Clothes Line



Wall Tissue Box Holder



Vertical Wall Soap Dispenser (40oz)



Horizontal Wall Soap Dispenser (40oz)



Recessed Extra Roll Tissue Holder



Recessed Double Tissue Holder



Surface Mounted Double Tissue Holder



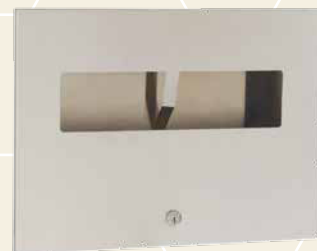
Deck Mounted Soap Dispenser Available in 4 or 6" Pumps (4" Shown)



Sanitary Napkin Holder



Wall Mounted C-fold Tissue Paper Dispenser



Recessed or Wall Mounted Toilet Seat Cover Dispenser



Towel Shelf with Towel Bar



Coat Rack with Shelf



626-344-9779
www.HHBathandSafety.com
100% A.D.A Compliant
Made in the USA

